

Mechanical Fabrication 2 Learning System

96-MPF2

ME

MECHANICAL



Interactive Multimedia Curriculum
and Student Reference Guide

Learning Topics:

- Pliers and Locking Devices
- Clamps and Vices
- Mallets and Non-Threaded Fasteners
- Press Fit Assembly
- Pins
- Torque Wrench
- Torque-Controlled Tool Identification
- Portable Power Tools
- Portable Drill / Drivers

Amatrol's Mechanical Fabrication 2 Learning System (96-MPF2) adds to Mechanical Fabrication 1 to expand knowledge of hand tools. Mechanical Fabrication 2 leads learners into more sophisticated assembly techniques including fasteners, torque wrenches, power tools and much more. This learning system will expand on the basic hand tools used in assembly.

Mechanical Fabrication 2 Learning System includes real-world components like a bench vise, torque wrench, cordless drill, dead blow hammer, needle nose pliers, and much more! Learners will use these components to practice skills like using a vise to hold parts during assembly, performing an assembly task with pliers, and using a twisted safety wire to lock a nut. This system also includes highly interactive multimedia curriculum, an instructor's assessment guide, an installation guide, and a student reference guide.

AMATROL®

Technical Data

Complete technical specifications available upon request.

Mechanical Fabrication Component Set

- Dowel Pins
- Cap Plugs
- Woodruff Keys
- Square Keys
- Flat Washers
- Thrust Bearings
- 5/8-in. External Snap Rings
- Cotter Pins
- 5/8-in. Shaft Collar
- 5/16-18 x 3/8-in. Brass Set Screw
- M8 Slotted and Jam Nuts

Fabrication Parts Set

- Belt
- Sheaves
- Upper and Lower Shaft
- Threaded Rods
- Tie Wire
- Wheel
- Lower and Upper Shaft Block

Mechanical Tools Kit

- Adjustable Torque Wrench
- Cordless Drill and Charger
- Dead Blow Hammer
- Needle Nose Pliers
- 3/16-in. Pin Punch
- 6-in. Extension Bar
- C-Clamp
- Snap Ring Pliers Set
- 3/8-in. Socket Adapter
- Slip Joint Pliers
- L-Allen 5/32-in.

Hardware Kit

- Bench Vise
- Vise Jaws Set
- 10-32 x 1/2-in. Socket Head Cap Screw
- #10 Washer and #10 Flat Washer
- Flat Socket Head Screws
- 3/8-16 x 3 1/2-in. Hex Head Screw
- Bolt-Stretch Demonstrator
- Gauge Mount
- 3/8-in. K-Lock Nut
- Dial Indicator
- Thread Forming Screws
- 3/8-16 x 13/4-in. Hex Socket Head Screw

Bolt Stretch Kit

- Hex Head Cap Screws
- Storage Box

Interactive Student Curriculum (M12245)

Instructor's Guide (C12245)

Installation Guide (D12245)

Student Reference Guide (H12245)

Additional Requirements:

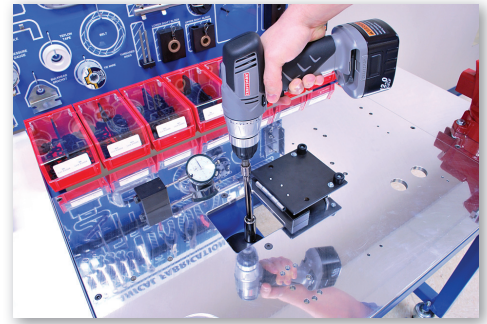
- Mechanical Fabrication 1 (96-MPF1)
- Computer: See requirements: <http://www.amatrol.com/support/computer-requirements>

Utilities:

None

Gain Hands-On Fabrication Skills Like Using a Portable Drill to Tighten Fasteners

Mechanical Fabrication 2 includes a mechanical fabrication component set, a fabrication parts set, a mechanical tool kit, a hardware kit, and a bolt stretch kit. Learners will use these components to practice skills like: installing a snap ring, using a dead blow hammer to perform an assembly task, assembling two parts using a key fastener, pressing fit a pin using a dead blow hammer, and using a torque wrench and backup wrench to tighten fasteners.

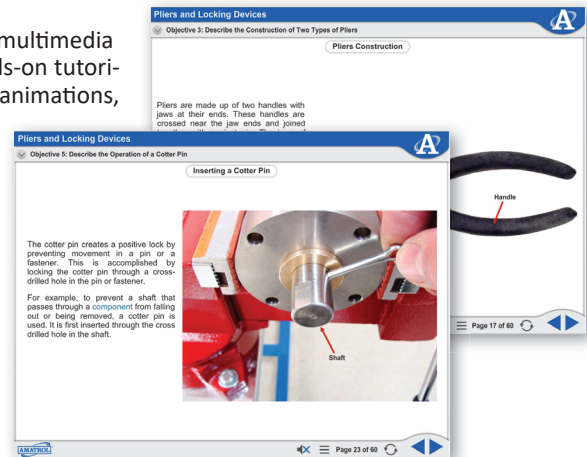


Safety Emphasized at All Levels

Mechanical Fabrication 2 not only teaches students proper fabrication techniques but also focuses on the importance of safety in using these techniques. It can be easy to be injured and/or break a tool if the tool is used improperly. Student applications in the curriculum emphasize safety rules and step by step tutorials to ensure safety of students and proper usage of tools.

Highly Interactive Multimedia Covers Topics Like The Operation of Cotter Pins

Mechanical Fabrication 2's interactive multimedia instruction with both theory and hands-on tutorials consists of text, video, stunning 3D animations, online self-review tests, interactive simulations, and more! Within this curriculum, learners will cover topics like the construction and operation of pliers, the operation and installation of a snap ring, and the operation of clevis, taper, shear, and slotted spring pins.



Student Reference Guide

A sample copy of the Mechanical Fabrication 2 Student Reference Guide is also included with the system for your evaluation. Sourced from the system's multimedia curriculum, the Student Reference Guide takes the entire series' technical content contained in the learning objectives and combines them into one perfect-bound book. Student Reference Guides supplement this course by providing a condensed, inexpensive reference tool that learners will find invaluable once they finish their training making it the perfect course takeaway.

